

# Counseling at Truman

/ DISTINCT BY DESIGN

Degree offered

# MA

Master of Arts  
in Counseling



## 100% online

All faculty are licensed counselors with extensive practical counseling experience.

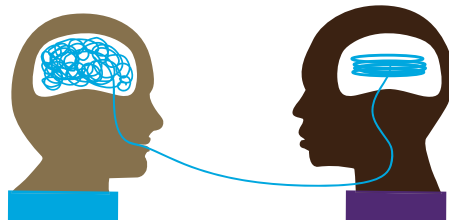
Be prepared to work with people from different backgrounds in:

- schools
- agencies
- hospitals
- universities
- private practice



The program operates on a research-based cohort model.

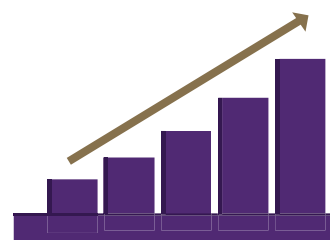
We equip caring, committed, competent, and culturally aware individuals with backgrounds from all fields of study.



School Counseling, Rehabilitation Counseling, and Mental Health Counseling or any combination!

Graduates are eligible for initial counseling licenses.

(Check individual states.)



Promising Missouri job outlook:

- 7.9% growth in school counseling
- 8.8% growth in rehabilitation counseling
- 19.9% growth in mental health counseling



For more information

Visit [counseling.truman.edu](https://counseling.truman.edu)

# COUNSELING

(online)

## DEGREE REQUIREMENTS:

### Core Requirements for All Counseling Students: 39 Hours

Students must complete the following core courses for all degree options:

- COUN 603G – Assessment and Appraisal Credits: 3
- COUN 641G – Professional Orientation and Ethics Credits: 3
- COUN 644G – Research Methods in Counseling Credits: 3
- COUN 654G – Social and Cultural Foundations Credits: 3
- COUN 656G – Counseling Skills Credits: 3
- COUN 657G – Diagnosis in Counseling Credits: 3
- COUN 660G – Career Development Credits: 3
- COUN 663G – Group Counseling Credits: 3
- COUN 664G – Theories and Techniques of Counseling Credits: 3
- COUN 666G – Human Growth and Development Credits: 3
- COUN 671G – Intervention, Prevention, and Crisis Response Credits: 3
- COUN 672G – Counselor as Consultant and Agent of Change Credits: 3
- COUN 674G – Introduction to Addictions Credits: 3

### Professional Practice Requirements: 3 Hours

Students must also complete one of the following courses in professional practice, as applicable to their program.

- COUN 661G – Professional Practice in Schools Credits: 3
- COUN 676G – Professional Practice in Clinical Mental Health Counseling Credits: 3
- COUN 677G – Rehabilitation Foundations and Ethics Credits: 3

### Specialization Requirements: 9 Hours

Students must also complete the following courses, as applicable to their program.

- COUN 669G – Child and Adolescent Counseling Credits: 3; Mental Health, School
- COUN 673G – Introduction to Family and Couples Counseling Credits: 3; Mental Health, School
- COUN 675G – Treatment Procedures and Psychopharmacology Credits: 3; Mental Health, School
- COUN 678G – Medical Aspects of Disability Credits: 3; Rehabilitation

- COUN 679G – Psychosocial and Family Aspects of Disability Credits: 3; Rehabilitation
- COUN 682G – Vocational Planning and Case Management Credits: 3; Rehabilitation

### Practicum and Internship: 9 Hours

The remaining 9 hours of coursework consist of

- COUN 653G – Practicum in School Counseling Credits: 3 or
- COUN 670G – Practicum in Clinical Mental Health Credits: 3

and 6 total hours of internship course credit

- COUN 668G – Counseling Internship Credits: 3

Internship courses may be repeated for credit.

**SPECIAL NOTE:** Students pursuing school counselor certification must document completion of a course in Psychology/Education of the Exceptional Child. Truman's ED 605G Psychology of Exceptional Children Credits: 3 may meet this requirement, if needed. Students without teaching certificates may also need COUN 693G Teaching Methods and Practices/Classroom Management for Counselors. These courses do not count toward the overall counseling program GPA.

## APPLICATION REQUIREMENTS:

To be considered for admission, a prospective student must submit:

- Official copies of all undergraduate and graduate transcripts, reflecting an earned baccalaureate degree from a college or university accredited by one of the six regional accrediting bodies recognized by the US Department of Education or the extra-national equivalent;\*
- GRE scores, for applicants with an undergraduate GPA below 3.000 (ETS code 6483);
- A personal statement;
- Contact information for three professional references;
- A completed criminal background check through the Family Care Safety Registry dated within 1 year of admission.

After the receipt of all materials, applicants will be invited to participate in a required interview, conducted online.

## TOTAL HOURS: 60