

# Counseling at Truman

**DISTINCT BY DESIGN**

Degree offered

# MA

Master of Arts  
in Counseling



## 100% online

All faculty are licensed counselors with extensive practical counseling experience.

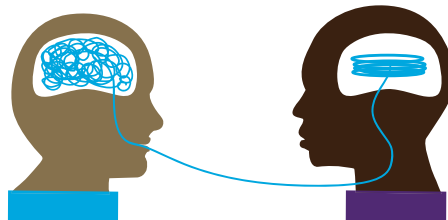
Be prepared to work with people from different backgrounds in:

- schools
- agencies
- hospitals
- universities
- private practice



The program operates on a research-based cohort model.

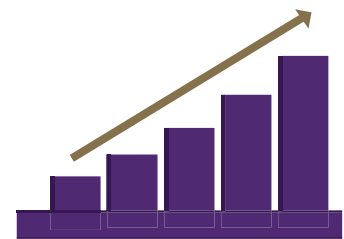
We equip caring, committed, competent, and culturally aware individuals with backgrounds from all fields of study.



**Two degree tracks:**

**School Counseling and Mental Health Counseling** or both!

Graduates are eligible for initial counseling licenses. (Check individual states.)



Promising job outlook:

- 10% growth in school-counseling nationally
- 22% growth in mental health counseling nationally



For more information

Visit [counseling.truman.edu](https://counseling.truman.edu)

# COUNSELING

(online)

## DEGREE REQUIREMENTS:

### Core Requirements for All Counseling Students: 48 Hours

Students must complete the following core courses for either degree option:

- COUN 603G – Assessment and Appraisal Credits: 3
- COUN 641G – Professional Orientation and Ethics Credits: 3
- COUN 644G – Research Methods in Counseling Credits: 3
- COUN 654G – Social and Cultural Foundations Credits: 3
- COUN 656G – Counseling Skills Credits: 3
- COUN 657G – Diagnosis in Counseling Credits: 3
- COUN 660G – Career Development Credits: 3
- COUN 663G – Group Counseling Credits: 3
- COUN 664G – Theories and Techniques of Counseling Credits: 3
- COUN 666G – Human Growth and Development Credits: 3
- COUN 669G – Child and Adolescent Counseling Credits: 3
- COUN 671G – Intervention, Prevention, and Crisis Response Credits: 3
- COUN 672G – Counselor as Consultant and Agent of Change Credits: 3
- COUN 673G – Introduction to Family and Couples Counseling Credits: 3
- COUN 674G – Introduction to Addictions Credits: 3
- COUN 675G – Treatment Procedures and Psychopharmacology Credits: 3

### Professional Practice Requirements: 3 Hours

Students must also complete one of the following courses in professional practice, as applicable to their program.

- COUN 661G – Professional Practice in Schools Credits: 3
- COUN 676G – Professional Practice in Clinical Mental Health Counseling Credits: 3

### Practicum and Internship: 9 Hours

The remaining 9 hours of coursework consist of

- COUN 653G – Practicum in School Counseling Credits: 3 or
- COUN 670G – Practicum in Clinical Mental Health Credits: 3

and a combination of internship courses for 6 total hours of credit

- COUN 668G – Counseling Internship Credits: 3
- COUN 680G – Internship Elementary Education Credits: 3
- COUN 681G – Internship Secondary Education Credits: 3
- COUN 683G – Internship in Clinical Mental Health Credits: 3

Internship courses may be repeated for credit.

**SPECIAL NOTE:** Students pursuing school counselor certification must document completion of a course in Psychology/Education of the Exceptional Child. Truman's ED 605G Psychology of Exceptional Children Credits: 3 may meet this requirement, if needed. Students without teaching certificates may require additional coursework. These courses do not count toward the overall counseling program GPA.

## APPLICATION REQUIREMENTS:

To be considered for admission, a prospective student must submit:

- Official copies of all undergraduate and graduate transcripts, reflecting an earned baccalaureate degree from a college or university accredited by one of the six regional accrediting bodies recognized by the US Department of Education or the extra-national equivalent;\*
- GRE scores, for applicants with an undergraduate GPA below 3.000 (ETS code 6483);
- A personal statement;
- Contact information for three professional references;
- A completed criminal background check through the Family Care Safety Registry dated within 1 year of admission.

After the receipt of all materials, applicants will be invited to participate in a required interview, conducted online.

## TOTAL HOURS: 60