

Applied Behavior Analysis

DISTINCT BY DESIGN

Degree offered

MA

Master of Arts
in Disability Studies -
Applied Behavior
Analysis

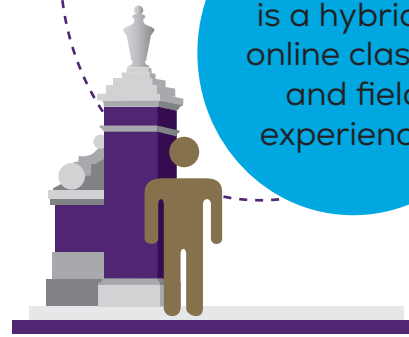
A graduate certificate is
also offered for students
who have earned a
master's degree



No. 6 best master's
university in the nation.
- WASHINGTON MONTHLY (2021)



The degree
is a hybrid of
online classes
and field
experiences



Focus on
cultural
awareness



The program operates
on a research-based
cohort model.

Provides the
knowledge and skills
to become a Board
Certified Behavior
Analyst (BCBA)

Learn to implement
the guiding principles
of behavior analysis
and **the most current
and effective,
evidence-based
treatment procedures**
to achieve behavior
change for the client.

APPLICATION
AVAILABLE ONLINE

truman.edu/apply-for-graduate-studies/



For more information

Visit truman.edu/ma-disability-studies-applied-behavior-analysis



DISABILITY STUDIES - APPLIED BEHAVIOR ANALYSIS

MASTER'S OR CERTIFICATE

MASTER'S

DEGREE REQUIREMENTS:

Required Courses (6 Hours)

- DS 605G - Theoretical and Philosophical Foundations of Disability Studies Credits: 3
- ED 605G - Psychology of Exceptional Children Credits: 3
- OR SED 530 - Psychology of the Exceptional Child Credits: 3

Behavior Analysis Courses (24 Hours)

- ABA 610G - Introduction to Applied Behavior Analysis I Credits: 3
- ABA 620G - Introduction to Behavior Change Credits: 3
- ABA 630G - Introduction to Applied Behavior Analysis II Credits: 3
- ABA 640G - Foundations of Assessment and Research Credits: 3
- ABA 650G - Introduction to Functional Behavior Assessment Credits: 3
- ABA 660G - Management and Leadership in Disability Services Credits: 3
- ABA 670G - Advanced Behavior Change Credits: 3
- ABA 680G - BABC Compliance Code, Disciplinary Systems, and Professionalism Credits: 3

Practicum and Internship (12 Hours)

The remaining 12 hours of coursework consists of:

- ABA 690G - Practicum in Behavior Analysis Credits: 3
- ABA 695G - Internship in Behavior Analysis Credits: 3

Total Hours: 42

ADMISSION REQUIREMENTS:

- Official copies of all undergraduate and graduate transcripts, reflecting an earned baccalaureate degree from a college or university accredited by one of the six regional accrediting bodies recognized by the US Department of Education or the extra-national equivalent.
- An undergraduate GPA of 2.75 or higher.
- A personal statement, as described on the departmental website.
- A completed criminal background check dated within 1 year of admission.

CERTIFICATE

DEGREE REQUIREMENTS:

- ABA 610G - Introduction to Applied Behavior Analysis I Credits: 3
- ABA 620G - Introduction to Behavior Change Credits: 3
- ABA 630G - Introduction to Applied Behavior Analysis II Credits: 3
- ABA 640G - Foundations of Assessment and Research Credits: 3
- ABA 650G - Introduction to Functional Behavior Assessment Credits: 3
- ABA 660G - Management and Leadership in Disability Services Credits: 3
- ABA 670G - Advanced Behavior Change Credits: 3
- ABA 680G - BABC Compliance Code, Disciplinary Systems, and Professionalism Credits: 3

Total Hours: 24

ADMISSION REQUIREMENTS:

- Online application
- Personal statement
- Official transcripts
- Background check
- Completion of a master's degree with a GPA of at least 3.0